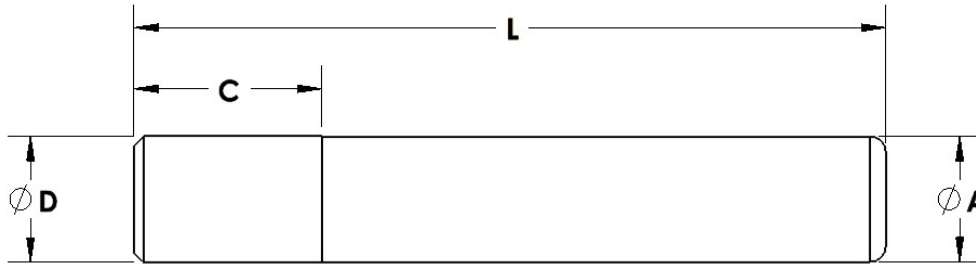


Case Hardened to 58 - 62 Rc



Tolerances		
Nom. Dia.	A	D
3/4	+0/- .0003	+0/- .0006
7/8		
1	+0/- .0004	+0/- .0008
1-1/4		
1-1/2		
1-3/4	+0/- .0005	
2		
2-1/2	+0/- .0006	
3		

L	Nominal Diameter								
	3/4	7/8	1	1 1/4	1 1/2	1 3/4	2	2 1/2	3
4.00	GP-0616	GP-0716	GP-0816	GP-1016					
4.50	GP-0618	GP-0718	GP-0818	GP-1018	GP-1218				
5.00	GP-0620	GP-0720	GP-0820	GP-1020	GP-1220				
5.50	GP-0622	GP-0722	GP-0822	GP-1022	GP-1222				
6.00	GP-0624	GP-0724	GP-0824	GP-1024	GP-1224	GP-1424	GP-1624		
6.50	GP-0626	GP-0726	GP-0826	GP-1026	GP-1226	GP-1426	GP-1626		
7.00	GP-0628	GP-0728	GP-0828	GP-1028	GP-1228	GP-1428	GP-1628		
7.50	GP-0630	GP-0730	GP-0830	GP-1030	GP-1230	GP-1430	GP-1630		
8.00	GP-0632	GP-0732	GP-0832	GP-1032	GP-1232	GP-1432	GP-1632	GP-2032	
8.50			GP-0834	GP-1034	GP-1234	GP-1434	GP-1634	GP-2034	
9.00			GP-0836	GP-1036	GP-1236	GP-1436	GP-1636	GP-2036	GP-2436
9.50				GP-1038	GP-1238	GP-1438	GP-1638		
10.00			GP-0840	GP-1040	GP-1240	GP-1440	GP-1640	GP-2040	GP-2440
11.00				GP-1044	GP-1244	GP-1444	GP-1644	GP-2044	GP-2444
12.00				GP-1048	GP-1248	GP-1448	GP-1648	GP-2048	GP-2448
13.00						GP-1452	GP-1652	GP-2052	GP-2452
14.00						GP-1456	GP-1656	GP-2056	GP-2456
15.00						GP-1460	GP-1660	GP-2060	GP-2460
17.00						GP-1468	GP-1668	GP-2068	GP-2468
19.00							GP-1676	GP-2076	GP-2476
21.00								GP-2084	GP-2484
A	0.750	0.875	1.000	1.250	1.500	1.750	2.000	2.500	3.000
D	0.752	0.877	1.002	1.2525	1.5025	1.7525	2.0025	2.5025	3.0025
C	1.375	1.5	1.5	1.75	2.00	2.25	2.5	3.5	4.0